

Holiday Inn Chester - South



[View the Access Guide](#)

Wrexham Road, Chester, Cheshire CH4 9DL

0871 942 9019

www.ihg.com/holidayinn/hotels/gb/en/chester/chewr/hoteldetail (<https://www.ihg.com/holidayinn/hotels/gb/en/chester/chewr/hoteldetail>)

Guide Last Updated: 13/02/2018

[Something changed? \(/contact/something_changed?destination=/access-guide/kew-green/holiday-inn-chester-south\)](/contact/something_changed?destination=/access-guide/kew-green/holiday-inn-chester-south)



Google

(https://maps.google.com/maps?ll=53.157916,-2.911258&z=14&t=m&hl=en-US&gl=US&mapclient=api_v3)

Map data ©2018 Google

Access Guide



[Explain these icons \(/our-icons\)](#)

[Expand all](#) [Collapse all](#)

Hotel Introduction	Collapse -
<p>Related Access Guide(s)</p> <p style="text-align: right;">Collapse -</p> <ul style="list-style-type: none"> For the Holiday Inn Chester - South - Leisure Facilities DisabledGo access guide please click here (new tab) (https://www.disabledgo.com/access-guide/holiday-inn/holiday-inn-chester---south---leisure-facilities). 	
<p>Hotel Information</p> <p style="text-align: right;">Collapse -</p> <ul style="list-style-type: none"> The hotel has its own parking facilities. This hotel has its own restaurant located on the first floor. Conference/meeting facilities are available. The conference/meeting facilities are located on the first floor. 	
<p>Room Information</p> <p style="text-align: right;">Collapse -</p> <ul style="list-style-type: none"> The hotel has 145 rooms in total. 	

- There is an/are accessible room(s) within the hotel.
- The accessible room(s) is/are located on the ground floor.
- The hotel has 2 accessible room(s) with accessible ensuite facilities.
- There is/are 2 accessible room(s) with a bath.
- There is an/are adjoining room(s) available for the accessible room(s).
- The accessible rooms are 25m - 32m from the hotel entrance.
- There is a/are standard room(s) available on the ground floor.
- There is an/are adjoining room(s) available for the standard room(s).
- Rooms on other floors are accessed via stairs or lift.

Auxiliary Aids

Collapse -

- Vibrating pillows with flashing beacons are available on request.
- Bed raisers are not available on request.
- Bath mats are available on request.
- All televisions have subtitles available.

Getting Here

Collapse -

By Road

Collapse -

- This hotel is located on the outskirts of Rotherham, just off Junction 38 of the A55. The hotel is located on the A483.
- This hotel has a car park which is free for all users.

By Bus

Collapse -

- There is a bus stop within 150 metres of the hotel.
- The nearest bus stop is located outside the hotel on the A483.
- [For more information on Arriva buses please click here \(opens new tab\) \(https://www.arrivabus.co.uk/wales\)](https://www.arrivabus.co.uk/wales).

By Train

Collapse -

- The nearest Railway Station is Chester.
- Chester Station is situated in the centre of Chester, located approximately 4 miles from the hotel. There are bus and taxi routes to the hotel from the station.
- [For more information on National Rail please click here \(opens new tab\) \(http://www.nationalrail.co.uk/stations/ctr/details.html\)](http://www.nationalrail.co.uk/stations/ctr/details.html).

Getting Help and Assistance

Collapse -

- There is a member of staff available for help and assistance.
- Staff receive disability awareness/equality training.
- Staff do not receive deaf awareness training.
- There is not a member of staff trained in British Sign Language.
- The alternative formats documents can be provided in include; large print on request.
- There is an assistance dog toilet or toileting area at the venue/near by.
- The assistance dog toilet or toileting area is located on the grass areas surrounding the hotel.
- Water bowls for assistance dogs are available.
- There are not mobility aids available.

Parking (Main Car Park)

Collapse -

Parking

Collapse -

- The hotel does have its own parking facilities.
- The car park is located to the left of the hotel.
- The car park type is open air/surface.
- The car park does not have a height restriction barrier.
- The car park does not have a barrier control system.
- The car park surface is tarmac.
- There is a/are Blue Badge parking bay(s) available.
- The Blue Badge bay(s) is/are clearly marked.
- There is/are 4 designated Blue Badge parking bay(s) within the car park.
- The dimensions of the designated Blue Badge parking bay(s) surveyed are 360cm x 601cm (11ft 10in x 19ft 9in).
- There is a 120cm hatched zone around the Blue Badge parking bay(s).
- Parking spaces for Blue Badge holders do not need to be booked in advance.
- Clearly marked/signposted parent and child parking bays are not available.
- All parking spaces are provided on a first come first served basis.
- There are additional car parks for staff and visitors.
- There is a car park to the right hand side of the hotel.

Paying

Collapse -

- There are not parking charges for the car park.

Access from the Car Park

Collapse -

- The route from the car park to the entrance is accessible to a wheelchair user with assistance.
- Assistance may be required because there is/are slopes/ramps.
- The entrance is clearly visible from the car park.
- The surface on the approach to the entrance is concrete tiles.
- There is not a road to cross between the car park and the entrance.
- The nearest designated Blue Badge parking bay is approximately 26m (28yd 1ft) from the hotel entrance.

Drop-off Point(s)

Collapse -

- There is not a/are not clearly marked drop-off point(s).

Comments

Collapse -

- On arriving at the hotel guests must enter their car registration number into the touchscreen which is located on the reception desk in the main hotel or in the leisure facilities.
- The height of the touchscreen at the main reception desk is 135cm (shown in photograph 5).
- The height of the touchscreen at the leisure facilities reception desk is also 135cm (shown in photograph 6).



1



2



3



4



5



6

Parking (Leisure Facilities Car Park)

Collapse -

Parking

Collapse -

- The hotel does have its own parking facilities.
- The car park is located to the right of the hotel, in front of the leisure facilities.
- The car park type is open air/surface.
- The car park does not have a height restriction barrier.
- The car park does not have a barrier control system.
- The car park surface is tarmac.
- There is a/are Blue Badge parking bay(s) available.
- The Blue Badge bay(s) is/are clearly marked.
- There is/are 2 designated Blue Badge parking bay(s) within the car park.
- The dimensions of the designated Blue Badge parking bay(s) surveyed are 374cm x 605cm (12ft 3in x 19ft 10in).
- There is a 120cm hatched zone around the Blue Badge parking bay(s).
- Parking spaces for Blue Badge holders do not need to be booked in advance.
- Clearly marked/signposted parent and child parking bays are not available.
- All parking spaces are provided on a first come first served basis.
- There are additional car parks for staff and visitors.
- The main car park is to the left of the hotel.

Paying

Collapse -

- There are not parking charges for the car park.

Access from the Car Park

Collapse -

- The route from the car park to the entrance is accessible to a wheelchair user with assistance.
- Assistance may be required because there is/are dropped kerbs.
- The entrance is clearly visible from the car park.
- The surface on the approach to the entrance is concrete tiles.
- There is not a road to cross between the car park and the entrance.
- There is no tactile paving on dropped kerbs between the car park and the entrance.
- The nearest designated Blue Badge parking bay is approximately 9m (9yd 2ft) from the leisure facilities entrance.

Drop-off Point(s)

Collapse -

- There is not a/are not clearly marked drop-off point(s).

Comments

Collapse -

- On arriving at the hotel guests must enter their car registration number into the touchscreen which is located on the reception desk in the main hotel or in the leisure facilities.
- The height of the touchscreen at the main reception desk is 135cm (shown in photograph 6).

- The height of the touchscreen at the leisure facilities reception desk is also 135cm (shown in photograph 7).



1



2



3



4



5



6



7

Outside Access (Hotel Entrance)

Collapse -

Entrance

Collapse -

- This information is for the entrance located at the front of the hotel.
- The entrance area/door is clearly signed.
- There is ramped/sloped or stepped access at this entrance.
- There is a canopy or recess which provides weather protection at this entrance.
- There is a dark mat or floor marking at this entrance that might be perceived as a hole.
- The entrance door(s) does not/do not contrast visually with its immediate surroundings.
- The main door(s) open(s) automatically.
- The door(s) is/are double width.
- The width of the door opening is 138cm.
- There is a second set of doors.
- The door(s) open(s) automatically.
- The door(s) is/are double width.
- The width of the door opening is 156cm.
- There is a member of staff available for assistance at this entrance.

Ramp/Slope

Collapse -

- The ramp/slope is located to the left as you face the entrance.
- The gradient of the ramp/slope is slight.
- The ramp/slope is permanent.
- There is a level landing at the top of the ramp/slope.
- There is a/are handrail(s) at the ramp.
- The handrail(s) is/are on both sides going up.
- The ramp/slope does bypass the step(s).

Step(s)

Collapse -

- The step(s) is/are located to the right as you face the entrance.
- There is/are 1 step(s).
- The step(s) is/are clearly marked.
- The height of the step(s) is/are between 15cm and 18cm.
- The going of the step(s) is/are not between 30cm and 45cm.

- There is a/are handrail(s) at the step(s).
- The handrail(s) is/are on both sides going up.
- Handrails are at the recommended height (90cm-100cm).
- Handrails do cover the flight of stairs throughout its length.
- Handrails are easy to grip.
- Handrails do not extend horizontally beyond the first and last steps.

Comments

Collapse -

- There is a kerbstone to the left as you face the step.
- The kerbstone is shallow (7cm).
- The kerbstone does not have handrails.



1



2



3



4



5



6

Reception

Collapse -

Reception

Collapse -

- The reception point is located to the right as you enter via the hotel entrance.
- The reception point is approximately 5m (5yd 1ft) from the hotel entrance.
- The reception area/desk is clearly visible from the entrance.
- There is step free access to the reception point.
- There is a clear unobstructed route to the reception point.
- There are no windows, TVs, glazed screens or mirrors behind the reception point which could adversely affect the ability of someone to lip read.
- The reception counter is not placed in front of a background which is patterned.
- The lighting levels at the reception point are good.
- The height of the reception counter is high (110cm+).
- There is sufficient space to write or sign documents on the counter.
- There is a lowered section of the counter.
- The lowered section of the counter is at the recommended height of 76cm.
- There is sufficient space to write or sign documents on the lowered section of the counter.
- There is a clear knee recess beneath the lowered section of the counter.
- The clear knee recess does not have the recommended dimensions of 70cm (height) x 50cm (depth).
- The counter is staffed.
- Clipboards can be provided to anyone who is unable to use the desk.
- There is not a hearing assistance system at the reception point.
- Signs and universally accepted symbols or pictograms, indicating lifts, stairs, WCs, circulation routes and other parts of the building are provided in the reception area.
- The type of flooring in the reception area is carpet and wood.

Reception Waiting Area

Collapse -

- There is a waiting area close to the reception point.
- Access to the waiting area is unobstructed.
- There is a mixture of seating with and without armrests.
- There is sufficient space for a wheelchair user to use the waiting area.



1



2



3



4

Getting Around

Collapse -

Access

Collapse -

- There is step free access throughout the building.
- There is a slight ramp, with handrails on both sides, for access to rooms 102 to 148 and the syndicate rooms.
- This ramp is located in the front left hand corridor of the hotel. This ramp turns a corner and has a gap in the handrails on the left (going up) due to a window as shown in photograph 1. Just before the corner the handrails become solid again (shown in photograph 2).
- There is a slight ramp, with handrails on both sides, for access to the leisure facilities from the hotel reception foyer.
- This ramp is located just through the doorway in the bar area and to the right of reception. After passing through the doorway this ramp leads downwards to the leisure suite (shown in photographs 3 and 4). Leading downwards there are handrails on both sides. If turning left after passing through the doorway this ramp leads upwards to rooms 129 - 153 (shown in photographs 5 and 6). In the upwards direction the ramp does not have handrails.
- There is a slight ramp, with handrails on both sides, for access to the lift.
- The width of the ramp/slope is 120cm (3ft 11in).
- The ramp/slope does bypass the step(s).
- There is/are 2 clearly marked step(s), with handrails on both sides, for access to the lift.
- The height of the step(s) is/are not between the recommended 15cm and 18cm.
- The going of the step(s) is/are not between the recommended 30cm and 45cm.
- This ramp and steps are located to the left of the reception lobby and are located in front of the lift. The ramp is shown in photographs 7 and 8. The steps are shown in photographs 9 and 10.

Circulation

Collapse -

- There are doors in corridors/walkways which have to be opened manually.
- The type of flooring in corridors/walkways is carpet, tiles and wood.
- There is some flooring in corridors/walkways which includes patterns or colours which could be confusing or look like steps or holes to some people.
- There is some flooring in corridors/walkways which is shiny and could cause issues with glare or look slippery to some people.
- There is good colour contrast between the walls and floor in the majority of corridors/walkways.
- There is a mixture of seating with and without armrests at regular intervals.
- The lighting levels are good.
- Access to other floors/levels is via stairs and lift.

Signage

Collapse -

- Wayfinding signage is provided.

- The colour, design and typeface of signs is consistent throughout the building.

Audio

Collapse -

- This venue does play background music in public areas.
- Music is played in the reception lobby, bar area and first floor restaurant.
- There is not a hearing assistance system in the public areas of the building.



1



2



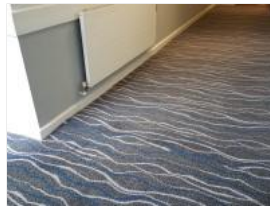
3



4



5



6



7



8



9



10



11



12



13



14

→ Restaurant
Rooms 255 - 259
← Meeting Rooms
Rooms 202 - 253
Rooms 401 - 420

Eating and Drinking (Terrace Bar and Lounge)

Collapse -

- The following information is for the restaurant/bar.
- The restaurant/bar is located on the ground floor.
- There is step-free access to the bar.
- Full table service is available.
- Food and/or drinks can be ordered from the service counter.
- There is not a hearing assistance system.
- There is step-free access within the bar.
- There is ample room for a wheelchair user to manoeuvre.
- This area does play background music.
- The type of flooring in this area is carpet, tiles and wood.
- No tables are permanently fixed.
- Some chairs are permanently fixed.
- Some chairs have armrests on both sides.
- The nearest table is approximately 1m from the entrance/opening.
- The nearest table is approximately 1m from the till/counter.

- The distance between the floor and the lowest table is 67cm.
- The distance between the floor and the highest table is 99cm.
- The standard height for tables is 75cm.
- Plastic/takeaway cups are available.
- Plastic/takeaway cutlery is not available.
- Drinking straws are available.
- There are hand held menus and menu boards/signs available.
- Menus are not available in Braille.
- Menus are not available in large print.
- Picture menus are not available.
- Menus are clearly written.
- Menus are presented in contrasting colours.
- The type of food served here is hot and cold meals and snacks.
- The lighting levels are good.

Comments

Collapse -

- The bar has 2 counters.
- The counter to the right as you enter is medium height (shown in photograph 1).
- Just past this counter is a high counter (shown in photograph 2).



1



2



3



4



5



6

Accessible Room(s) (Rooms 102 and 106)

Collapse -

Accessible Room Information

Collapse -

- The details in this section relates to the accessible room(s) with a lowered bath.
- This type of accessible room is located on the ground floor.
- There is step-free access to this type of accessible room.
- All accessible rooms of this type have similar specifications.
- Guests need to open a door between the entrance and the room(s).
- The narrowest width of the corridor leading to the room surveyed was 114cm.

Bedroom Features

Collapse -

- The accessible room surveyed is located on the ground floor, to the left of the hotel.
- The accessible room surveyed at the time of the visit was Room 102.
- There is ramped/sloped access to the accessible room surveyed.
- There is numbered signage on or near the accessible room door.

- The door is manual with a key card lock.
- The fob/card reader height is 117cm.
- The width of the door is 91cm (2ft 12in).
- There are lowered spy holes available.
- The bed type is single.
- The bed height is not adjustable.
- The height of the bed is 59cm (1ft 11in).
- The measurement between the bed base and floor is 13cm (5in).
- The bed is moveable.
- The room does have an unobstructed minimum turning space of 150cm x 150cm next to the bed.
- The height of the desk is 76cm.
- The desk is not height adjustable.
- The desk knee recess has the recommended dimensions of 70cm (height) x 50cm (depth).
- The room surveyed had a height adjustable chair with armrests and an armchair.
- Wardrobes have been adapted to allow use from a seated position.
- Light switches are between 75cm and 120cm (4ft) from floor level.
- Electric sockets are between 40cm and 100cm (4ft) from floor level.
- The window control type(s) for the room is a/are standard lever(s).
- There is an emergency alarm in the room.
- The emergency pull cord alarm is out of reach (higher than 10cm (4") from floor).
- The emergency alarm rings to reception.
- There is a flashing fire alarm beacon within the room.
- The type of flooring is carpet.

Ensuite Facilities

Collapse -

- The ensuite door opens outwards.
- The door weight is heavy.
- The door is locked by a twist lock.
- The width of the door to the ensuite is 87cm (2ft 10in).
- The dimensions of the ensuite are 282cm x 271cm (9ft 3in x 8ft 11in).
- The ensuite does have an unobstructed minimum turning space of 150cm x 150cm in front of the toilet seat.
- The ensuite has not got a non-slip floor.
- There is an emergency alarm within the ensuite.
- The emergency pull cord alarm is out of reach (higher than 10cm (4") from floor).
- The emergency alarm rings to reception.
- There is a flashing fire alarm beacon within the ensuite.
- Disposal facilities are available.
- There is a/are general domestic waste disposal units.
- There is a mirror.
- The mirror is not placed at a lower level or at an angle for ease of use.
- There is a shelf immediately next to or behind the toilet.
- The shelf is not between 90cm and 100cm.
- There is a wash basin.
- The wash basin cannot be reached from seated on the toilet.
- The wash basin is not placed higher than 74cm (2ft 5in).
- There are vertical wall-mounted grab rails on both sides of the wash basin.
- The tap type is lever.
- There is a mixer tap.
- There is not a soap dispenser.

Toilet Details

Collapse -

- The height of the toilet seat above floor level is 52cm (1ft 8in).

- The toilet has a covered cistern.
- There is a lateral transfer space.
- As you face the toilet pan the transfer space is on the right.
- The lateral transfer space is 162cm (5ft 4in).
- There is a flush, however it is not on the transfer side.
- There is not a spatula type lever flush.
- There is a dropdown rail on the transfer side.
- There is a/are wall-mounted grab rail(s) available.
- As you face the toilet, the wall mounted grab rails are on the left.
- There is not a vertical wall-mounted grab rail on the transfer side.
- There is a horizontal wall-mounted grab rail on the opposite side of the seat to the transfer space.
- There is a toilet roll holder.
- The toilet roll holder can be reached from seated on the toilet.
- The toilet roll holder is not placed higher than 100cm (3ft 3in).

Bath Details

Collapse -

- The ensuite has a lowered bath.
- The height of the side of the bath from floor level is 48cm (1ft 7in).
- The tap type is lever.
- There is a mixer tap.
- There is a shower over the bath.
- The shower head is height adjustable.
- The shower control type is lever.
- There is a/are wall-mounted grab rail(s) available for the bath.

Colour Contrast and Lighting

Collapse -

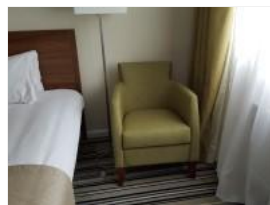
- The colour contrast between the external hotel room door and wall is poor.
- The colour contrast between the internal hotel room door and wall is good.
- The colour contrast between the hotel room walls and floor is good.
- The colour contrast between the external ensuite door and wall is poor.
- The colour contrast between the internal ensuite door and wall is poor.
- The colour contrast between the ensuite walls and floor is fair.
- The colour contrast between the drop down rail(s) and wall is good.
- The colour contrast between the wall-mounted grab rail(s) and wall is good.
- The toilet seat colour contrast is poor.
- The lighting levels in the room are low.
- The lighting levels in the ensuite are good.



1



2



3



4



5



6



7



8

Standard Room(s) (Room 103)

Collapse -

Bedroom Features

Collapse -

- The room surveyed is located on the ground floor, to the left of the hotel.
- The room surveyed at the time of the visit was Room 103.
- There is ramped/sloped access to the room surveyed.
- There is numbered signage on or near the room door.
- The width of the door is 70cm (2ft 4in).
- The bed type is double.
- The height of the bed is 61cm (2ft).
- The measurement between the bed base and floor is 13cm (5in).
- Light switches are not within 120cm (3ft 11in) from floor level.
- There is not an emergency alarm in the room.
- There is not a flashing fire alarm beacon within the room.
- The type of facilities within the ensuite include; a toilet, a wash basin and a shower.
- The ensuite door opens inwards.
- The width of the door to the ensuite is 64cm (2ft 1in).
- There is not an emergency alarm within the ensuite.
- There is not a flashing fire alarm beacon within the ensuite.
- The tap type is lever.
- There is a mixer tap.

Colour Contrast and Lighting

Collapse -

- The colour contrast between the external hotel room door and wall is good.
- The colour contrast between the internal hotel room door and wall is fair.
- The colour contrast between the hotel room walls and floor is good.
- The colour contrast between the external ensuite door and wall is good.
- The colour contrast between the internal ensuite door and wall is poor.
- The colour contrast between the walls and floor in the ensuite is good.
- The lighting levels in the room are low.
- The lighting levels in the ensuite are good.

Comments

Collapse -

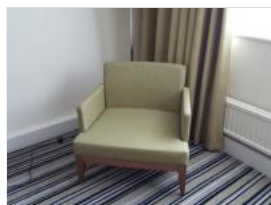
- There is a deep step to access the shower created by the shower tray (shown in photograph 9).



1



2



3



4



5



6



7



8



9

Other Floors

Collapse -

Stairs

Collapse -

- Stairs can be used to access other floors.
- The stairs are for public use.
- The stairs are located to the rear of the reception lobby.
- The stairs are approximately 8m from the hotel entrance.
- The stairs are clearly visible from the entrance.
- The floors which are accessible by stairs are G and 1.
- There are 15+ steps between floors.
- The height of the step(s) is/are between the recommended 15cm and 18cm.
- The going of the step(s) is/are not between the recommended 30cm and 45cm.
- The steps are clearly marked.
- There is a/are handrail(s) at the step(s).
- The steps have a handrail on both sides.
- Handrails are not at the recommended height (90cm-100cm).
- Handrails do cover the flight of stairs throughout its length.
- Handrails are easy to grip.
- Handrails do not extend horizontally beyond the first and last steps.
- There is a landing.
- Clear signs indicating the facilities on each floor are provided on landings.
- The lighting levels at the steps are good.



1



2



3

Lift

Collapse -

- There is a lift for public use.
- The lift is located to the left of the reception foyer.
- Signs indicating the location of the lift are not available from the entrance.
- The lift is approximately 11m (12yd 1in) from the hotel entrance.
- The lift is a standard lift.
- A member of staff does not need to be notified for use of the lift.
- The floors which are accessible by this lift are G, 1 and 2.
- Clear signs indicating the facilities on each floor are provided on lift lobby landings.
- There is a clear level manoeuvring space of 150cm x 150cm in front of the lift.
- Lift doors do not contrast visually with lift lobby walls.
- The external controls for the lift are within 90cm - 110cm from the floor.
- The colour contrast between the external lift controls and the control plate is good.

- The colour contrast between the external lift control plate and the wall is poor.
- The clear door width is 90cm (2ft 11in).
- The dimensions of the lift are 133cm x 138cm (4ft 4in x 4ft 6in).
- There are separate entry and exit doors in the lift.
- There is a mirror to aid reversing out of the lift.
- There is not a list of floor services available within the lift.
- The lift does have a visual floor indicator.
- The lift does have an audible announcer.
- The controls for the lift are within 90cm - 120cm from the floor.
- There is a hearing loop system.
- The lift does have Braille markings.
- The lift does have tactile markings.
- The lighting levels in the lift are good.

Comments

Collapse -

- The lift operates between the ground and first floor.
- The restaurant on the first floor is on 2 levels.
- The lift covers both of these levels.
- If you require access to the lower level of the restaurant the floor 1 button needs to be pressed.
- If you require access to the higher level of the restaurant or the first floor rooms, or conference/meeting rooms, button 2 needs to be pressed.



1



2

Eating and Drinking (Junction Restaurant)

Collapse -

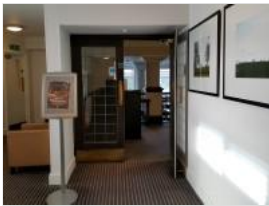
- The following information is for the restaurant.
- The restaurant is located on the first floor, ahead as you exit the lift.
- There is step free access, via lift, to the restaurant.
- There is a/are double, heavy manual door(s) to access this area.
- Full table service is available.
- Food and/or drinks can be ordered from the service counter.
- There is not a hearing assistance system.
- There is step free access, via lift, within the restaurant.
- There is ample room for a wheelchair user to manoeuvre.
- This area does play background music.
- The type of flooring in this area is carpet.
- No tables are permanently fixed.
- Some chairs are permanently fixed.
- No chairs have armrests on both sides.
- The nearest table is approximately 4m from the entrance/opening.
- The standard height for tables is 72cm.
- Plastic/takeaway cups are available.
- Plastic/takeaway cutlery is not available.
- Drinking straws are available.
- There are hand held menus available.
- Menus are not available in Braille.
- Menus are not available in large print.
- Picture menus are not available.

- Menus are clearly written.
- Menus are presented in contrasting colours.
- The type of food served here is hot and cold meals and snacks.
- The lighting levels are good.

Comments

Collapse -

- There are double doors to access the restaurant on the first floor (shown in photograph 1).
- There are no doors in the lift lobby area.
- The restaurant is on 2 levels.
- Both levels of the restaurant can be accessed via the lift.
- There are 4 medium height steps, with handrails on both sides within the restaurant (shown in photographs 5 and 6).
- The steps lead from the lower level to upper level.
- The steps have handrails on both sides.
- The lift overcomes these steps.



1



2



3



4



5



6

Conference / Meeting Facilities (Eccleston Suites 1 and 2)

Collapse -

- Conference/meeting facilities are available.
- The conference/meeting facilities are located on the first floor, ahead through the restaurant, then left through the restaurant doors.
- There is ramped/sloped access to the conference/meeting facilities.
- The door opening width(s) is/are 75cm+ for the room(s).
- There is not a hearing assistance system for the room(s).
- There are no chairs with armrests on both sides within the room(s).
- There is sufficient space for a wheelchair user to manoeuvre within the room(s).
- The lighting levels in the room(s) are good.

Comments

Collapse -

- Eccleston Suite 1 is located to the right as you enter via the main Eccleston Suites door.
- Eccleston Suite 2 is located ahead as you enter via the via the main Eccleston Suites door.
- There are manual double doors to enter Eccleston Suites 1 and 2.
- The doors are similar to the main entrance door shown in photograph 1.
- The doors to both suites open away from you (push).
- The doors are heavy.
- Eccleston Suite 1 and 2 are separated by a divider and can be opened up to create one large room.
- There is an easy slope without handrails just before the entrance (shown in photograph 4).



1



2



3



4

Accessible Toilet(s)

Collapse -

- There is an/are accessible toilet(s) for public use.

Location and Access

Collapse -

- The accessible toilet surveyed is not for the sole use of disabled people.
- This accessible toilet is located in the reception lobby, to the left as you enter the hotel entrance.
- This accessible toilet is approximately 4m (4yd 1ft) from the hotel entrance.
- There is step-free access to the accessible toilet.

Features and Dimensions

Collapse -

- This is a shared toilet.
- A key is not required for the accessible toilet.
- There is tactile and pictorial signage on or near the toilet door.
- The door opens inwards.
- The door is heavy.
- The door is locked by a locking handle.
- The width of the accessible toilet door is 87cm (2ft 10in).
- The dimensions of the accessible toilet are 222cm x 210cm (7ft 3in x 6ft 11in).
- The accessible toilet does not have an unobstructed minimum turning space of 150cm x 150cm.
- The toilet has not got a non-slip floor.
- There is a lateral transfer space.
- As you face the toilet pan the transfer space is on the left.
- The lateral transfer space is 155cm (5ft 1in).
- There is a flush, however it is not on the transfer side.
- There is not a spatula type lever flush.
- There is a dropdown rail on the transfer side.
- There is not an emergency alarm.
- There is not a flashing fire alarm beacon within the toilet.
- Disposal facilities are available in the toilet.
- There is a/are female sanitary, non-infectious waste and general domestic waste disposal units.
- There is a/are coat hook(s).
- The height of the coat hook is 170cm from the floor.

Position of Fixtures

Collapse -

- There is a/are wall-mounted grab rail(s) available.
- As you face the toilet the wall-mounted grab rail(s) is/are on the right.
- There is not a vertical wall-mounted grab rail on the transfer side.
- There is a horizontal wall-mounted grab rail on the opposite side of the seat to the transfer space.
- There is a mirror.
- The mirror is not placed at a lower level or at an angle for ease of use.
- There is a shelf next to the toilet.
- The shelf is not between 90cm and 100cm.

- The toilet has a lid.
- The height of the toilet seat above floor level is 52cm (1ft 8in).
- There is a toilet roll holder.
- The toilet roll holder can be reached from seated on the toilet.
- The toilet roll holder is placed higher than 100cm (3ft 3in).
- The height of the toilet roll holder is 107cm (3ft 6in).
- There is a wash basin.
- The wash basin cannot be reached from seated on the toilet.
- The wash basin is not placed higher than 74cm (2ft 5in).
- There are vertical wall-mounted grab rails on both sides of the wash basin.
- The wash basin tap type is lever.
- There is a mixer tap.
- There is a soap dispenser.
- The soap dispenser cannot be reached from seated on the toilet.
- The height of the soap dispenser is 88cm.
- There is a towel dispenser.
- The towel dispenser cannot be reached from seated on the toilet.
- The towel dispenser is not placed higher than 100cm (3ft 3in).
- There is a hand dryer.
- The hand dryer cannot be reached from seated on the toilet.
- The hand dryer is not placed higher than 100cm (3ft 3in).

Colour Contrast and Lighting

Collapse -

- The contrast between the external door and wall is good.
- The contrast between the internal door and wall is good.
- The contrast between the dropdown rail(s) and wall is good.
- The contrast between the wall-mounted grab rail(s) and wall is good.
- The toilet seat colour contrast is poor.
- The contrast between the walls and floor is fair.
- The lighting levels are good.

Baby Changing Facilities

Collapse -

- Baby changing facilities are located within the accessible toilet.
- The baby change table is not set against the wall, permanently fixed at 75cm from the floor.
- The baby change table is not height adjustable.
- The height of the baby change table once extended is 84cm (2ft 9in).



1



2



3

Standard Toilet(s)

Collapse -

- Standard toilet facilities are available.

Access to Standard Female Toilet(s)

Collapse -